



STATE OF NORTH CAROLINA  
DEPARTMENT OF TRANSPORTATION

ROY COOPER  
GOVERNOR

J. ERIC BOYETTE  
SECRETARY

October 28, 2022

**ADDENDUM # 1**

To: Plan Holders  
From: Wes Jamison, P.E.  
Division Project Development Engineer

DS

RE: **Revisions to Provisions, Plan Sheets, and Pay Items**  
Contract ID: DN00684  
County: Henderson  
Letting Date: November 8, 2022

The above contract has experienced the following revisions:

1. On **page G-11**, replace provision **SP1 G43, FUEL PRICE ADJUSTMENT**, with the attached updated version.
2. On **page G-47**, insert the attached provision **SP6 R02R, INCIDENTAL MILLING**, after the provision **SP2 R02A, CLEARING AND GRUBBING - METHOD II**, but before the provision **SP6 R03R, SHOULDER WEDGE**.
3. On **page G-63**, insert the attached provision **SP11 R30, LAW ENFORCEMENT**, above **SP12 R05, EXTRUDED THERMOPLASTIC PAVEMENT MARKING THICKNESS**.
4. At the top of **page EC-6** of the proposal, insert the provision titled **LITTER REMOVAL (Mowing Areas Only)**. See the attached provision.
5. The following pay items have been **added** to the proposal:
  - a. **6114800000-N, MANUAL LITTER REMOVAL, 2 MHR**
  - b. **6114900000-E, LITTER DISPOSAL, 0.1 TON**
  - c. **6018000000-E, SEED FOR TEMPORARY SEEDING, 50 LB**
  - d. **6021000000-E, FERTILIZER FOR TEMPORARY SEEDING, 0.5 TON**
  - e. **4455000000-N, FLAGGER, 15 DAYS**

*f. 4850000000-E, REMOVAL OF PAVEMENT MARKING LINES (4"), 1250 LF*

*g. 4870000000-E, REMOVAL OF PAVEMENT MARKING LINES (24"), 550 LF*

*h. 4875000000-N, REMOVAL OF PAVEMENT MARKING SYMBOLS & CHARACTERS, 5 EA*

(See attached revised bid items sheets **T-1 thru T-5**).

6. The following **plan sheets** have been **revised**. Please **replace** the existing sheets with the corresponding revised sheets.

*a. 1A*

*b. 4*

Please access ebs addenda files on Bid Express®.

Thank you for your attention to this matter.

**FUEL PRICE ADJUSTMENT:**

(11-15-05) (Rev. 11-15-22)

109-8

SP1 G43

Revise the *2018 Standard Specifications* as follows:

**Page 1-87, Article 109-8, Fuel Price Adjustments**, add the following:

The base index price for DIESEL #2 FUEL is \$ **3.4665** per gallon. Where any of the following are included as pay items in the contract, they will be eligible for fuel price adjustment.

The pay items and the fuel factor used in calculating adjustments to be made will be as follows:

Description	Units	Fuel Usage Factor Diesel
Unclassified Excavation	Gal/CY	0.29
Borrow Excavation	Gal/CY	0.29
Class IV Subgrade Stabilization	Gal/Ton	0.55
Aggregate Base Course	Gal/Ton	0.55
Sub-Ballast	Gal/Ton	0.55
Erosion Control Stone	Gal/Ton	0.55
Rip Rap, Class _____	Gal/Ton	0.55
Asphalt Concrete Base Course, Type _____	Gal/Ton	0.90 or 2.90
Asphalt Concrete Intermediate Course, Type _____	Gal/Ton	0.90 or 2.90
Asphalt Concrete Surface Course, Type _____	Gal/Ton	0.90 or 2.90
Open-Graded Asphalt Friction Course	Gal/Ton	0.90 or 2.90
Permeable Asphalt Drainage Course, Type _____	Gal/Ton	0.90 or 2.90
Sand Asphalt Surface Course, Type _____	Gal/Ton	0.90 or 2.90
Ultra-thin Bonded Wearing Course	Gal/Ton	0.90 or 2.90
Aggregate for Cement Treated Base Course	Gal/Ton	0.55
Portland Cement for Cement Treated Base Course	Gal/Ton	0.55
> 11" Portland Cement Concrete Pavement	Gal/SY	0.327
Concrete Shoulders Adjacent to > 11" Pavement	Gal/SY	0.327
9" to 11" Portland Cement Concrete Pavement	Gal/SY	0.272
Concrete Shoulders Adjacent to 9" to 11" Pavement	Gal/SY	0.272
< 9" Portland Cement Concrete Pavement	Gal/SY	0.245
Concrete Shoulders Adjacent to < 9" Pavement	Gal/SY	0.245

For the asphalt items noted in the chart as eligible for fuel adjustments, the bidder may include the *Fuel Usage Factor Adjustment Form* with their bid submission if they elect to use the fuel usage factor. The *Fuel Usage Factor Adjustment Form* is found at the following link:

<https://connect.ncdot.gov/letting/LetCentral/Fuel%20Usage%20Factor%20Adjustment%20Form%20-%20Starting%20Nov%202022%20Lettings.pdf>

Select either 2.90 Gal/Ton fuel factor or 0.90 Gal/Ton fuel factor for each asphalt line item on the *Fuel Usage Factor Adjustment Form*. The selected fuel factor for each asphalt item will remain in effect for the duration of the contract.

Failure to complete the *Fuel Usage Factor Adjustment Form* will result in using 2.90 gallons per ton as the Fuel Usage Factor for Diesel for the asphalt items noted above. The contractor will not be permitted to change the Fuel Usage Factor after the bids are submitted.

## **INCIDENTAL MILLING:**

(11-15-22)

607

SP6 R02R

Revise the *2018 Standard Specifications* as follows:

**Page 6-5, Article 607-3 CONSTRUCTION METHODS**, add the following paragraph after line 45:

Variable depth milling is intended to improve the cross-sectional slope of the pavement.

**Page 6-6, Article 607-3 CONSTRUCTION METHODS, line 9**, delete and replace the first sentence in the sixth paragraph with the following:

The Engineer may require re-milling of any area exhibiting pavement laminations, scabbing or other defects.

**Page 6-6, Article 607-4 TOLERANCE, lines 17-18**, delete and replace the second sentence with the following:

The Engineer may vary the depth of milling by not more than one inch. In the event the directed depth of milling cut is altered by the Engineer more than one inch, either the Department or the Contractor may request an adjustment in unit price in accordance with Article 104-3. In administering Article 104-3, the Department will give no consideration to value given to RAP due to the deletion or reduction in quantity of milling. Article 104-3 will not apply to the item of *Incidental Milling*.

**Page 6-6, Subarticle 607-5(A) Milled Asphalt Pavement, lines 21-23**, delete and replace the first sentence with the following:

Milled Asphalt Pavement, \_\_\_" Depth will be measured and paid as the actual number of square yards of pavement surface milled in accordance with this specification and accepted by the Engineer.

**Page 6-6, Subarticle 607-5(A) Milled Asphalt Pavement, lines 24-28**, delete and replace the third and fourth sentence with the following:

The width will be the width required by the plans or directed by the Engineer, measured along the pavement surface. Areas to be paid under this item include mainline travel lanes, full width turn lanes greater than 500 feet in length, collector lanes, shoulders, and any additional equipment necessary to remove pavement in the area of manholes, water valves, curb, gutter and other obstructions.

**Page 6-6, Subarticle 607-5(B) Milled Asphalt Pavement Depth Varies from Required Depth, lines 29-37**, delete and replace the title and first paragraph with the following:

**(B) Variable Depth Milled Asphalt Pavement**

*Milling Asphalt Pavement, \_\_\_" to \_\_\_"* will be measured and paid as the actual number of square yards of pavement surface milled in accordance with this specification and accepted by the Engineer. In measuring this quantity, the length will be the actual length milled, measured along the pavement surface. The width will be the width required by the plans or directed by the Engineer, measured along the pavement surface. Areas to be paid under this item include mainline travel lanes, full width turn lanes greater than 500 feet in length, collector lanes, shoulders, and any additional equipment necessary to remove pavement in the area of manholes, water valves, curb, gutter and other obstructions.

**Page 6-6, Subarticle 607-5(C) Incidental Milling, lines 45-49,** delete and replace the first and second sentence with the following:

*Incidental Milling* will be measured and paid as the actual number of square yards of surface milled where the Contractor is required to mill butt joints, irregular areas, full width turn lanes 500 feet or less, intersections milled and re-mill areas that are not due to the Contractor's negligence that is accepted by the Engineer. In measuring this quantity, the length will be the actual length milled, measured along the pavement surface. The width will be the width required by the plans or directed by the Engineer, measured along the pavement surface.

**Page 6-7, Subarticle 607-5(D) Milling of Defects, lines 6-10,** delete and replace the second sentence with the following:

If the Engineer directs re-milling of an area and is not due to the Contractor's negligence, the re-milled area will be measured as provided in Subarticle 607-5(C) and paid at the contract unit price per square yard for *Incidental Milling*.

**LAW ENFORCEMENT:**

(6-21-22)(Rev. 11-15-22)

1190

SP11 R30

Revise the *2018 Standard Specifications* as follows:

**Page 11-19, Article 1190-1 DESCRIPTION, lines 4-5,** replace the paragraph with the following:

Furnish Law Enforcement Officers and official Law Enforcement vehicles to direct traffic in accordance with the contract.

**Page 11-19, Article 1190-2 CONSTRUCTION METHODS, lines 7-10,** replace the first and second paragraph with the following:

Use off duty uniformed Law Enforcement Officers and official Law Enforcement vehicles equipped with blue lights to direct or control traffic as required by the plans or by the Engineer.

Law Enforcement vehicles shall not be parked within the buffer space on any roadway. Law Enforcement vehicles shall not be used to close or block an active travel lane on multilane roadways with a posted speed limit of 45 MPH or higher, except as allowed during rolling roadblock operations as shown in the *Roadway Standard Drawings* or while responding to an emergency.

**Page 11-19, Article 1190-3 MEASUREMENT AND PAYMENT, lines 14-15,** replace the second sentence of the first paragraph with the following:

There will be no direct payment for official Law Enforcement vehicles as they are considered incidental to the pay item.

## **Litter Removal (Mowing Areas Only):**

(07-19-22)

### **Description**

This work consists of the pickup, removal, and disposal of litter from roadsides within the construction project prior to mowing operations.

### **Construction Methods**

Provide labor, equipment and materials necessary for the pickup and removal of litter from non-construction sources and the disposal of same into state approved landfills. The Contractor shall abide by all ordinances, laws and regulations regarding disposal of litter and recycling of eligible materials. Wastes generated from construction activities shall be managed as provided elsewhere in the contract. Litter items may consist of any item not considered normal to the right-of-way, including but not limited to, varied sizes of bottles, cans, paper, tires, tire pieces, lumber, vehicle parts, building supplies, metals, household furnishings, cardboard, plastics, ladders, brush and other items not considered normal to the right of way. Litter removal shall be performed in designated areas within five days prior to any mowing operations and as directed by the Engineer. Designated areas shall include vegetated medians and shoulders within the project limits including all interchange ramps and other areas to be mown. Designated areas may be omitted for litter removal by the Engineer due to safety concerns.

The Contractor shall provide adequate personnel and materials to collect and remove litter. The Contractor shall be responsible for locating and utilizing approved local landfills and recycling facilities. Refer to Section 105-27 of the *Standard Specifications* for potential hazardous materials. All collected litter shall be containerized immediately and kept off the traveled portions of the roadway, shoulders, and rights-of-way (including paved shoulders). All collected litter that is small enough to be placed in a bag shall be bagged immediately. All collected litter that is too large for a bag shall be placed into a vehicle. Extended storage or stockpiling of collected litter and recyclables will not be permitted.

The Contractor's personnel shall dispose of any litter in a landfill approved by North Carolina Division of Waste Management. The Contractor will not be allowed to use NCDOT accounts at the landfills/recycling centers nor be allowed to dispose of the litter in NCDOT trash containers on any NCDOT property.

The Contractor shall report online the number of bags of litter and any recycling on the NCDOT Litter Management Website on the date of the pickup at the following website:

<https://apps.ncdot.gov/LM>

An access code ('Pickup Key') for the online reporting portal may be obtained via emailing the Roadside Environmental Unit Litter Management Section at [ncdot.clr@ncdot.gov](mailto:ncdot.clr@ncdot.gov). The Contractor shall request access to the litter removal reporting website prior to starting initial litter collection operations.



## Measurement and Payment

The quantity of litter removal to be performed will be affected by the actual conditions that occur during construction of the project. The quantity of litter removal may be increased, decreased, or eliminated entirely as directed by the Engineer. Such variations in quantity will not be considered as alterations in the details of construction or a change in the character of the work.

*Manual Litter Removal* will be measured and paid as the actual number of man hours each worker spends picking up litter. Such price and payment will be full compensation for all litter removal work covered by *Litter Removal*, including, but not limited to, furnishing all materials, labor, equipment, transport, reporting, and incidentals necessary to accomplish the work.

*Litter Disposal* will be measured and paid for by the actual number of tons of litter collected and properly disposed of at a state approved landfill. Such price and payment will be full compensation for all fees, labor, transport, and incidentals necessary to dispose of collected litter associated with *Litter Removal*.

All traffic control necessary to provide a safe work area for *Litter Removal* shall be paid for as specified elsewhere in the contract.

Payment will be made under:

Pay Item	Pay Unit
Manual Litter Removal	MHR
Litter Disposal	TON

County: HENDERSON

Line #	Item Number	Sec #	Description	Quantity	Unit Cost	Amount
<b>ROADWAY ITEMS</b>						
0001	0000100000-N	800	MOBILIZATION	Lump Sum	L.S.	
0002	0000400000-N	801	CONSTRUCTION SURVEYING	Lump Sum	L.S.	
0003	0043000000-N	226	GRADING	Lump Sum	L.S.	
0004	1297000000-E	607	MILLING ASPHALT PAVEMENT, **** DEPTH (1.5")	3,820 SY		
0005	1491000000-E	610	ASPHALT CONC BASE COURSE, TYPE B25.0C	170 TON		
0006	1503000000-E	610	ASPHALT CONC INTERMEDIATE COURSE, TYPE I19.0C	70 TON		
0007	1523000000-E	610	ASPHALT CONC SURFACE COURSE, TYPE S9.5C	700 TON		
0008	1575000000-E	620	ASPHALT BINDER FOR PLANT MIX	60 TON		
0009	2000000000-N	806	RIGHT-OF-WAY MARKERS	16 EA		
0010	2549000000-E	846	2'-6" CONCRETE CURB & GUTTER	740 LF		
0011	2591000000-E	848	4" CONCRETE SIDEWALK	270 SY		
0012	2605000000-N	848	CONCRETE CURB RAMPS	7 EA		
0013	2647000000-E	852	5" MONOLITHIC CONCRETE ISLANDS (SURFACE MOUNTED)	220 SY		
0014	2800000000-N	858	ADJUSTMENT OF CATCH BASINS	2 EA		
0015	2830000000-N	858	ADJUSTMENT OF MANHOLES	1 EA		
0016	2845000000-N	858	ADJUSTMENT OF METER BOXES OR VALVE BOXES	11 EA		
0017	2920000000-N	859	CONVERT EXISTING DROP INLET TO CATCH BASIN	1 EA		

County: HENDERSON

Line #	Item Number	Sec #	Description	Quantity	Unit Cost	Amount
0018	2995000000-N	SP	GENERIC DRAINAGE ITEM CONVERT EXISTING MANHOLE TO CATCH BASIN	2 EA		
0019	3656000000-E	876	GEOTEXTILE FOR DRAINAGE	75 SY		
0020	4154000000-N	907	STOCKPILE SIGN SYSTEM, U- CHANNEL	1 EA		
0021	4155000000-N	907	DISPOSAL OF SIGN SYSTEM, U- CHANNEL	4 EA		
0022	4400000000-E	1110	WORK ZONE SIGNS (STATIONARY)	272 SF		
0023	4410000000-E	1110	WORK ZONE SIGNS (BARRICADE MOUNTED)	14 SF		
0024	4430000000-N	1130	DRUMS	85 EA		
0025	4445000000-E	1145	BARRICADES (TYPE III)	56 LF		
0026	4510000000-N	1190	LAW ENFORCEMENT	60 HR		
0027	4685000000-E	1205	THERMOPLASTIC PAVEMENT MARKING LINES (4", 90 MILS)	895 LF		
0028	4725000000-E	1205	THERMOPLASTIC PAVEMENT MARKING SYMBOL (90 MILS)	10 EA		
0029	4891000000-E	1205	GENERIC PAVEMENT MARKING ITEM THERMOPLASTIC PAVEMENT MARKING LINES (24", 90 MILS)	724 LF		
0030	6000000000-E	1605	TEMPORARY SILT FENCE	200 LF		
0031	6006000000-E	1610	STONE FOR EROSION CONTROL, CLASS A	75 TON		
0032	6012000000-E	1610	SEDIMENT CONTROL STONE	5 TON		
0033	6015000000-E	1615	TEMPORARY MULCHING	0.5 ACR		
0034	6018000000-E	1620	SEED FOR TEMPORARY SEEDING	100 LB		

County: HENDERSON

Line #	Item Number	Sec #	Description	Quantity	Unit Cost	Amount
0035	6024000000-E	1622	TEMPORARY SLOPE DRAINS	200 LF		
0036	6029000000-E	SP	SAFETY FENCE	60 LF		
0037	6042000000-E	1632	1/4" HARDWARE CLOTH	10 LF		
0038	6084000000-E	1660	SEEDING & MULCHING	0.5 ACR		
0039	6087000000-E	1660	MOWING	0.5 ACR		
0040	6090000000-E	1661	SEED FOR REPAIR SEEDING	50 LB		
0041	6093000000-E	1661	FERTILIZER FOR REPAIR SEEDING	0.25 TON		
0042	6096000000-E	1662	SEED FOR SUPPLEMENTAL SEEDING	50 LB		
0043	6108000000-E	1665	FERTILIZER TOPDRESSING	0.25 TON		
0044	6114500000-N	1667	SPECIALIZED HAND MOWING	10 MHR		
0045	6117000000-N	SP	RESPONSE FOR EROSION CONTROL	4 EA		
0046	6117500000-N	SP	CONCRETE WASHOUT STRUCTURE	1 EA		
0047	6132000000-N	SP	GENERIC EROSION CONTROL ITEM FABRIC INSERT INLET PROTECTION DEVICE	9 EA		
0048	6132000000-N	SP	GENERIC EROSION CONTROL ITEM FABRIC INSERT INLET PROTECTION DEVICE CLEANOUT	27 EA		
0049	7048500000-E	1705	PEDESTRIAN SIGNAL HEAD (16", 1 SECTION W/COUNTDOWN)	7 EA		
0050	7060000000-E	1705	SIGNAL CABLE	2,750 LF		
0051	7120000000-E	1705	VEHICLE SIGNAL HEAD (12", 3 SECTION)	5 EA		

County: HENDERSON

Line #	Item Number	Sec #	Description	Quantity	Unit Cost	Amount
0052	7132000000-E	1705	VEHICLE SIGNAL HEAD (12", 4 SECTION)	4 EA		
0053	7144000000-E	1705	VEHICLE SIGNAL HEAD (12", 5 SECTION)	3 EA		
0054	7264000000-E	1710	MESSENGER CABLE (3/8")	450 LF		
0055	7300000000-E	1715	UNPAVED TRENCHING (***** (1,2"))	250 LF		
0056	7301000000-E	1715	DIRECTIONAL DRILL (***** (1,2"))	60 LF		
0057	7324000000-N	1716	JUNCTION BOX (STANDARD SIZE)	5 EA		
0058	7372000000-N	1721	GUY ASSEMBLY	2 EA		
0059	7444000000-E	1725	INDUCTIVE LOOP SAWCUT	700 LF		
0060	7456000000-E	1726	LEAD-IN CABLE (***** (14-2)	2,100 LF		
0061	7576000000-N	SP	METAL STRAIN SIGNAL POLE	2 EA		
0062	7613000000-N	SP	SOIL TEST	2 EA		
0063	7614100000-E	SP	DRILLED PIER FOUNDATION	16 CY		
0064	7636000000-N	1745	SIGN FOR SIGNALS	8 EA		
0065	7642100000-N	1743	TYPE I POST WITH FOUNDATION	3 EA		
0066	7642200000-N	1743	TYPE II PEDESTAL WITH FOUNDATION	5 EA		
0067	7744000000-N	1751	DETECTOR CARD (TYPE 170)	3 EA		
0068	7960000000-N	SP	METAL POLE FOUNDATION REMOVAL	1 EA		

County: HENDERSON

Line #	Item Number	Sec #	Description	Quantity	Unit Cost	Amount
0069	7972000000-N	SP	METAL POLE REMOVAL	1 EA		
0070	6114800000-N	SP	MANUAL LITTER REMOVAL	2 MHR		
0071	6114900000-E	SP	LITTER DISPOSAL	0.1 TON		
0072	6018000000-E	1620	SEED FOR TEMPORARY SEEDING	50 LB		
0073	6021000000-E	1620	FERTILIZER FOR TEMPORARY SEEDING	0.5 TON		
0074	4455000000-N	1150	FLAGGER	15 DAY		
0075	4850000000-E	1205	REMOVAL OF PAVEMENT MARKING LINES (4")	1,250 LF		
0076	4870000000-E	1205	REMOVAL OF PAVEMENT MARKING LINES (24")	550 LF		
0077	4875000000-N	1205	REMOVAL OF PAVEMENT MARKING SYMBOLS & CHARACTERS	5 EA		

0923/Oct28/Q17341.6/D397676100000/E77

Total Amount Of Bid For Entire Project :

<u>SHEET NO.</u>	<u>DESCRIPTION</u>
1	TITLE SHEET
1A	INDEX OF SHEETS, GENERAL NOTES, AND STANDARD DRAWINGS
1B	CONVENTIONAL SYMBOLS
2A	PAVEMENT SCHEDULE, TYPICAL SECTIONS
2B	MONOLITHIC ISLAND DETAIL SHEET
2C-1 THRU 2C-2	CURB RAMP DETAIL SHEET
RW-1	RIGHT OF WAY CONTROL SHEET
4	PLAN SHEET
5	PROFILE SHEET
RW02C-1 THRU RW02C-3	RIGHT OF WAY PLANS
TMP-1 THRU TMP-6	TRANSPORTATION MANAGEMENT PLANS
PMP-1 THRU PMP-2	PAVEMENT MARKING PLANS
EC-1 THRU EC-4	EROSION CONTROL PLANS
SIGN-1 THRU SIGN-2	SIGNING PLANS
SIG1.0 THRU SIG.M9	SIGNAL PLANS
UO-1 THRU UO-2	UTILITY BY OTHERS PLANS
XSC-1 THRU XSC-3	CROSS SECTION SHEET

GRADE LINE:  
GRADING AND SURFACING OR RESURFACING AND WIDENING:  
THE GRADE LINES SHOWN DENOTE THE FINISHED ELEVATION OF THE PROPOSED SURFACING AT GRADE POINTS SHOWN ON THE TYPICAL SECTIONS. WHERE NO GRADE LINES ARE SHOWN, THE PROFILES SHOWN DENOTE THE TOP ELEVATION OF THE EXISTING PAVEMENT ALONG THE CENTER LINE OF SURVEY ON WHICH THE PROPOSED RESURFACING WILL BE PLACED. GRADE LINES MAY BE ADJUSTED BY THE ENGINEER IN ORDER TO SECURE A PROPER TIE-IN.

CLEARING:  
CLEARING ON THIS PROJECT SHALL BE PERFORMED TO THE LIMITS ESTABLISHED BY METHOD II. CONTRACTOR TO REMOVE ANY DEBRIS LEFT BY THE UTILITY CONSTRUCTION DURING THE CLEARING AND GRUBBING PHASE.

SUPERELEVATION:  
ALL CURVES ON THIS PROJECT SHALL BE SUPERELEVATED IN ACCORDANCE WITH STD. NO. 225.04 USING THE RATE OF SUPERELEVATION AND RUNOFF SHOWN ON THE PLANS. SUPERELEVATION IS TO BE REVOLVED ABOUT THE GRADE POINTS SHOWN ON THE TYPICAL SECTIONS.

DRIVEWAYS:  
DRIVEWAYS SHALL BE CONSTRUCTED IN ACCORDANCE WITH STD. 848.02 USING 3 FOOT RADII OR RADII AS SHOWN ON THE PLANS. LOCATIONS OF DRIVES WILL BE AS SHOWN ON THE PLANS OR AS DIRECTED BY THE ENGINEER. ALL DRIVEWAYS WILL BE REPAIRED TO MATCH EXISTING MATERIAL, AND BUILT TO THE RIGHT OF WAY LINE OR 15', WHICHEVER IS CLOSEST.

UTILITIES:  
UTILITY OWNERS ON THIS PROJECT ARE DUKE ENERGY, AT&T, AND HENDERSONVILLE WATER AND SEWER.  
  
ANY RELOCATION OF EXISTING UTILITIES WILL BE ACCOMPLISHED BY OTHERS, EXCEPT AS SHOWN ON THE PLANS.

RIGHT-OF-WAY:  
NCDOT IS ACQUIRING SOME ROW.

CURB RAMPS:  
CURB RAMPS ARE SHOWN ON THE PLANS AT APPROXIMATE LOCATIONS. CONSTRUCT ALL CURB RAMPS ACCORDANCE WITH STD 848.05 and/or 848.06.

THE FOLLOWING ROADWAY STANDARDS AS APPEAR IN "ROADWAY STANDARD DRAWINGS" - PROJECT SERVICES UNIT - N.C. DEPARTMENT OF TRANSPORTATION - RALEIGH, N.C., DATED JANUARY 2018 ARE APPLICABLE TO THIS PROJECT AND BY REFERENCE HEREBY ARE CONSIDERED A PART OF THESE PLANS:

DIVISION 2 - EARTHWORK

200.02 Method of Clearing - Method II

225.02 Guide for Grading Subgrade - Secondary and Local

225.04 Method of Obtaining Superelevation - Two Lane Pavement

DIVISION 8 - INCIDENTALS

846.01 Concrete Curb, Gutter and Curb & Gutter

848.01 Concrete Sidewalk

848.02 Driveway Turnout - Radius Type

848.04 Street Turnout

848.05 Curb Ramps (Proposed Curb & Gutter)

848.06 Curb Ramps (Existing Curb & Gutter)

852.01 Concrete Islands

PROJECT REFERENCE NO.	SHEET NO.
SM-6114C	1A

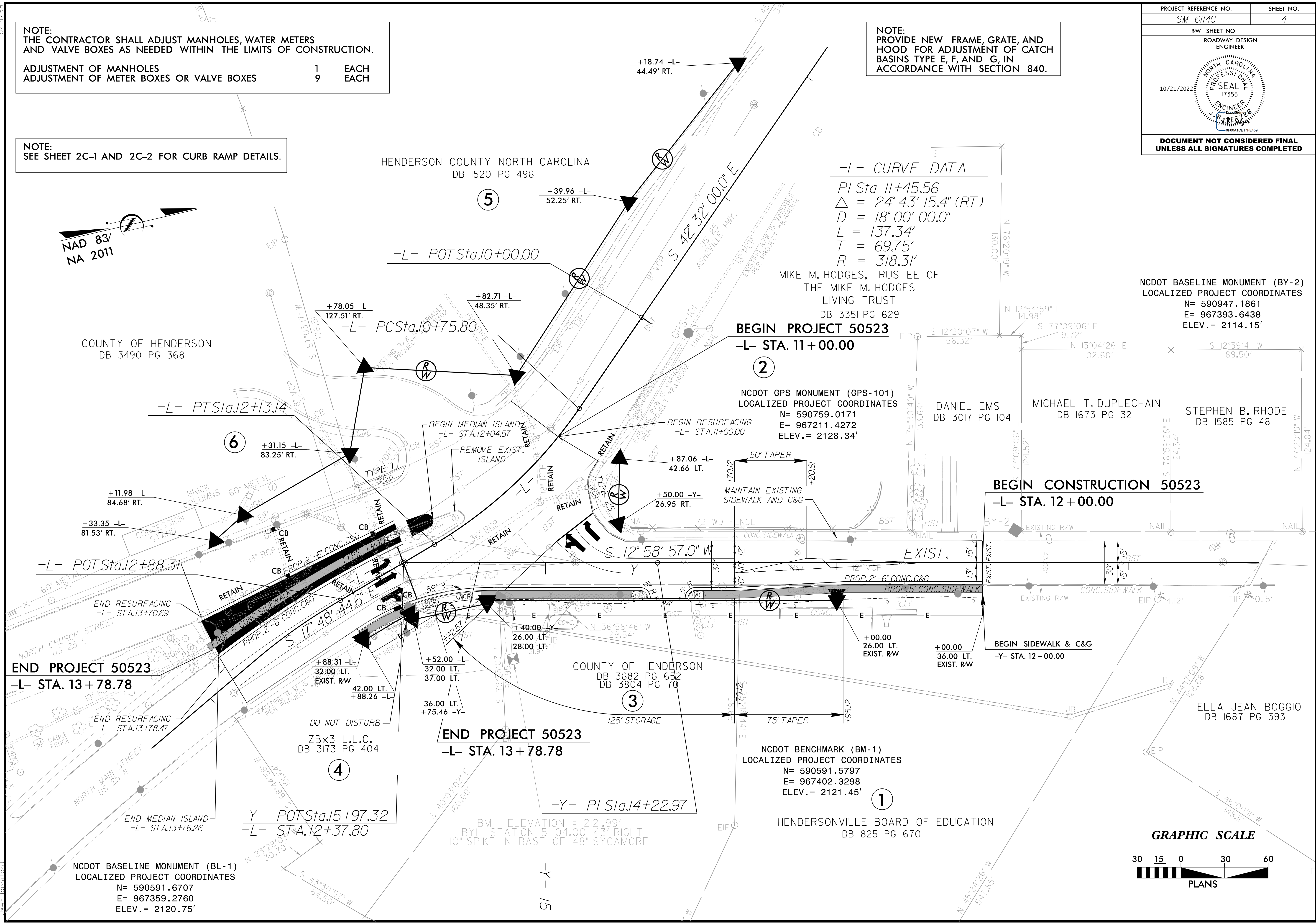
ROADWAY DESIGN  
ENGINEER

10/21/2025

NORTH CAROLINA  
PROFESSIONAL  
SEAL  
17355  
ENGINEER  
J. B. FETTER  
J. B. FETTER  
6F00A1CE17FE459

**DO NOT CONSIDERED FINAL  
UNLESS ALL SIGNATURES COMPLETED**





PROJECT REFERENCE NO.	SHEET NO.
SM-6114C	4
RW SHEET NO.	
ROADWAY DESIGN ENGINEER	
<b>DOCUMENT NOT CONSIDERED FINAL UNLESS ALL SIGNATURES COMPLETED</b>	